

**Pyxis**<sup>®</sup> | User Manual

# **PRISM**<sup>™</sup> **RT-100**

INLINE REFRACTOMETER



Pyxis Lab, Inc.  
1729 Majestic Drive (Suite 05)  
Lafayette, Colorado 80026  
+1 (866) 203-8397

# Prism RT-100 Online Digital Refractometer User Manual

August 23, 2021  
Rev. 1.03

**Pyxis Lab, Inc.**  
1729 Majestic Dr. Suite 5  
Lafayette, CO 80026 USA  
[www.pyxis-lab.com](http://www.pyxis-lab.com)

## Table of Contents

<b>1</b>	<b>Introduction</b>	<b>2</b>
1.1	Main Features . . . . .	2
<b>2</b>	<b>Specifications</b>	<b>3</b>
<b>3</b>	<b>Unpacking Instrument</b>	<b>4</b>
3.1	Standard Accessories . . . . .	4
3.2	Optional Accessories . . . . .	5
<b>4</b>	<b>Installation</b>	<b>5</b>
4.1	Main Assembly . . . . .	5
4.2	Piping . . . . .	6
4.3	Wiring . . . . .	7
4.4	Connecting via Bluetooth . . . . .	8
<b>5</b>	<b>Instrument Overview</b>	<b>9</b>
5.1	Key Functions . . . . .	9
5.2	Measurement Modes . . . . .	10
5.3	Sensitivity Setup . . . . .	10
5.4	Reset Parameters . . . . .	10
<b>6</b>	<b>Calibration</b>	<b>11</b>
6.1	Air Calibration of Refractive Index . . . . .	11
6.2	Brix and Other Liquid Concentration Offset Calibration . . . . .	12
<b>7</b>	<b>Setup and Configuration with uPyxis® Mobile App</b>	<b>12</b>
7.1	Download uPyxis® Mobile App . . . . .	12
7.2	Connecting to uPyxis® Mobile App . . . . .	13
7.3	Calibration Screen and Reading . . . . .	14
7.4	Diagnosis Screen . . . . .	15
7.5	Device Info Screen . . . . .	16
<b>8</b>	<b>Setup and Calibration with uPyxis® Desktop App</b>	<b>16</b>
8.1	Install uPyxis® Desktop App . . . . .	16
8.2	Connecting to uPyxis® Desktop App . . . . .	17
8.3	Information Screen . . . . .	18
8.4	Calibration Screen . . . . .	19
8.5	Diagnosis Screen . . . . .	20
<b>9</b>	<b>Outputs</b>	<b>21</b>
9.1	4–20mA Output Setup . . . . .	21
9.2	Communication using Modbus RTU . . . . .	21
<b>10</b>	<b>Sensor Maintenance and Precaution</b>	<b>22</b>
10.1	Methods to Cleaning the Prism RT-100 . . . . .	22
<b>11</b>	<b>Contact Us</b>	<b>22</b>

## **Warranty Information**

### **Confidentiality**

The information contained in this manual may be confidential and proprietary and is the property of Pyxis Lab, Inc. Information disclosed herein shall not be used to manufacture, construct, or otherwise reproduce the goods described. Information disclosed herein shall not be disclosed to others or made public in any manner without the express written consent of Pyxis Lab, Inc.

### **Standard Limited Warranty**

Pyxis Lab warrants its products for defects in materials and workmanship. Pyxis Lab will, at its option, repair or replace instrument components that prove to be defective with new or remanufactured components (i.e., equivalent to new). The warranty set forth is exclusive and no other warranty, whether written or oral, is expressed or implied.

### **Warranty Term**

The Pyxis warranty term is thirteen (13) months ex-works. In no event shall the standard limited warranty coverage extend beyond thirteen (13) months from original shipment date.

### **Warranty Service**

Damaged or dysfunctional instruments may be returned to Pyxis for repair or replacement. In some instances, replacement instruments may be available for short duration loan or lease.

Pyxis warrants that any labor services provided shall conform to the reasonable standards of technical competency and performance effective at the time of delivery. All service interventions are to be reviewed and authorized as correct and complete at the completion of the service by a customer representative, or designate. Pyxis warrants these services for 30 days after the authorization and will correct any qualifying deficiency in labor provided that the labor service deficiency is exactly related to the originating event. No other remedy, other than the provision of labor services, may be applicable.

Repair components (parts and materials), but not consumables, provided during a repair, or purchased individually, are warranted for 90 days ex-works for materials and workmanship. In no event will the incorporation of a warranted repair component into an instrument extend the whole instrument's warranty beyond its original term.

### **Warranty Shipping**

A Repair Authorization (RA) Number must be obtained from Pyxis Technical Support before any product can be returned to the factory. Pyxis will pay freight charges to ship replacement or repaired products to the customer. The customer shall pay freight charges for returning products to Pyxis. Any product returned to the factory without an RA number will be returned to the customer. To receive an RMA you can generate a request on our website at <https://pyxis-lab.com/request-tech-support/>.

### **Pyxis Technical Support**

Contact Pyxis Technical Support at +1 (866) 203-8397, [service@pyxis-lab.com](mailto:service@pyxis-lab.com), or by filling out a request for support at <https://pyxis-lab.com/request-tech-support/>.

## 1 Introduction

The Pyxis Prism RT-100 is an online digital refractometer that measures the refractive index of a liquid sample. This sensor provides a direct reading of highly accurate concentration values for a wide variety of water and process related applications. It is a stand-alone device capable of self-sustained operation, live data display, and data logging. The Prism RT-100 also offers fully integrated 4-20mA and RS-485 Modbus output signals for connectivity to any microprocessor-based controller, display, PLC, or DCS network. The Prism RT-100 has built-in temperature-dependent equations to convert the measured sample temperature and refractive index to the percentage concentration of Mono Ethylene Glycol (MEG), Mono Propylene Glycol (MPG), Sugar Content (Brix) and Advanced Low Viscosity Fluid (ALV).

**\*NOTE\*** *The Prism RT-100 is a very robust sensor and capable of operating in contaminated fluid samples. It is important, however, to note that users should take all precautions to mitigate and filter suspended solids from the sample stream prior to the sensor to avoid tenacious deposit build-up on the sensor eye. In highly fouled applications, Pyxis recommends users conduct sensor eye cleaning on a regular basis. Pyxis Lab will be launching an automated sensor cleaning accessory for installation into the Tri-Clamp Flow Cell Assembly as an optional accessory in the future.*

### 1.1 Main Features

- 4-20mA output of sample temperature and the displayed unit selected via the screen interface.
- RS-485 Modbus RTU output of temperature, refractive index and other diagnosis parameters.
- Built-in temperature dependent equations % BRIX, % MPG, % PEG and % ALV.
- Local display and historical data log saved in the unit programmable via **uPyxis®** App.
- Sturdy 316L stainless steel construction and suitable for harsh application environments.
- Convenient stainless steel Tri-Clamp Tee with 3/4-inch NPT Flange for Easy Install and Removal.

## 2 Specifications

**Table 1.** Prism RT-100 Specifications

Specification*	RT-100
Part Number (P/N)	55105
Measurement Range	Refractive Index: 1.31700–1.5100 Brix: 0.00–85.00% Temperature: -20–80 °C
Measurement Resolution	Refractive Index: 0.0001 Brix and Glycol: 0.1%
Measurement Accuracy	Refractive Index: ±0.0002 Brix and Glycol: ±0.2%
Outputs	2x 4–20mA Analog Output, RS-485 Digital Output with Modbus protocol
Power Supply	24 VDC (1.5 W)
Sample Temperature	-4–158 °F (-20–70 °C)
Sample Pressure	Up to 142 psi (0.98 MPa)
Sample Flow	Up to 13.5 gpm (9.8 ft/s)
Environmental Temperature	14–104 °F (-10–40°C)
Weight	6.2 lbs (2.8 kg)
Dimension	4.33 × 4.57 inch (110 × 116 mm)
Light Source	LED
Wet Materials	Sapphire, 316L stainless steel
Enclosure Rating	IP-67
Regulation	CE/RoHS

\* With Pyxis's continuous improvement policy, these specifications are subject to change without notice.

### 3 Unpacking Instrument

Remove the instrument and accessories from the shipping container and inspect each item for any damage that may have occurred during shipping. Verify that all accessory items are included. If any item is missing or damaged, please contact Pyxis Lab Customer Service at [service@pyxis-lab.com](mailto:service@pyxis-lab.com).

#### 3.1 Standard Accessories

RT-100 Prism Package (P/N 55105)

- The package should include one RT-100 Prism Refractive Index Sensor w/8Pin Female Cable
- One 316L Stainless Steel Tri-Clamp Flow Cell Assembly for RT-100 (P/N 56206)
- One MA-1.5CR Cable (1.5 Meter/ 4.9 ft 8Pin Male Adapter/Flying Lead) (P/N 50746)



**Figure 1.** RT-100 Prism Inline Refractometer / Tri-Clamp Flow Cell Assembly for RT-100 / MA-1.5 Flying Lead Cable

### 3.2 Optional Accessories

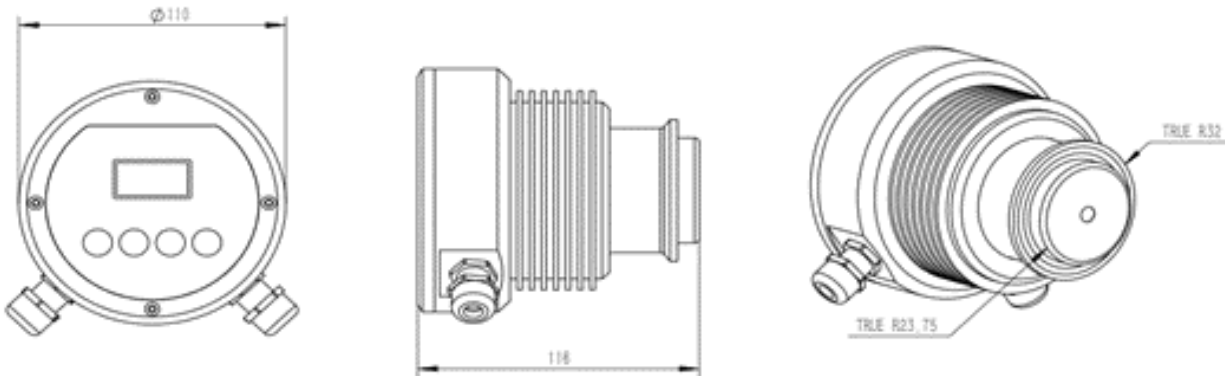
The following optional accessories can be ordered from Pyxis Customer Service ([order@pyxis-lab.com](mailto:order@pyxis-lab.com)) or Pyxis E-Store at <https://pyxis-lab.com/shop/>.

**Table 2.** Optional Accessories

Optional Accessories	Part Number (P/N)
Prism RT-100 Wall Outlet Power Supply Adapter Kit <i>(Plug In Power Supply Kit - Converts Wall Outlet 110VAC to 24VDC for Prism RT-100 — 2-Pin)</i>	56207
MA-CR <i>(Bluetooth Adapter for 8-Pin Pyxis Sensors for use with uPyxis Mobile &amp; Desktop)</i>	MA-CR
MA-NEB <i>(USB Bluetooth Adapter for PC to use uPyxis Desktop)</i>	MA-NEB
MA-50CR (50' Extension Cable w/ 8-Pin Adapters)	50743
Pyxis Probe Cleaning Kit	SER-01
Prism RT-100 Tri-Clamp Flow Cell Assembly Complete Replacement	56206
Prism RT-100 Tri-Clamp Flow Cell Assembly Replacement Gasket Kit	56209

## 4 Installation

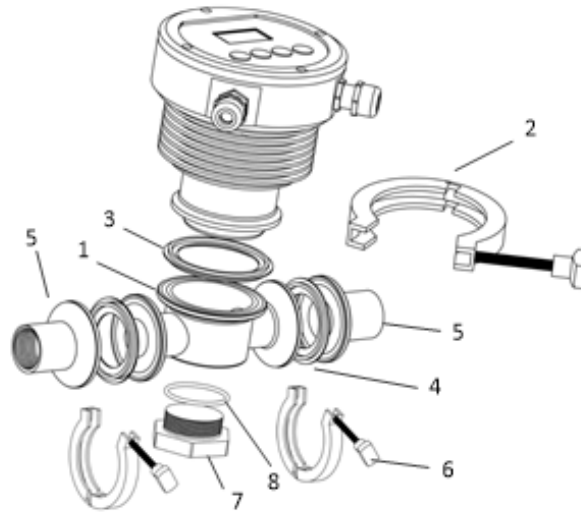
### 4.1 Main Assembly



**Figure 2.** Prism RT-100 Sensor Dimensions (mm)

Each Prism RT-100 is provided with a 316L stainless steel Tri-Clamp Inline Flow Assembly with 3/4-inch FNPT inlet/outlet flanges. An NPT plug is inserted into a portal opposite of the sensor eye for future automated sensor-eye cleaning accessories currently under development by Pyxis Lab.





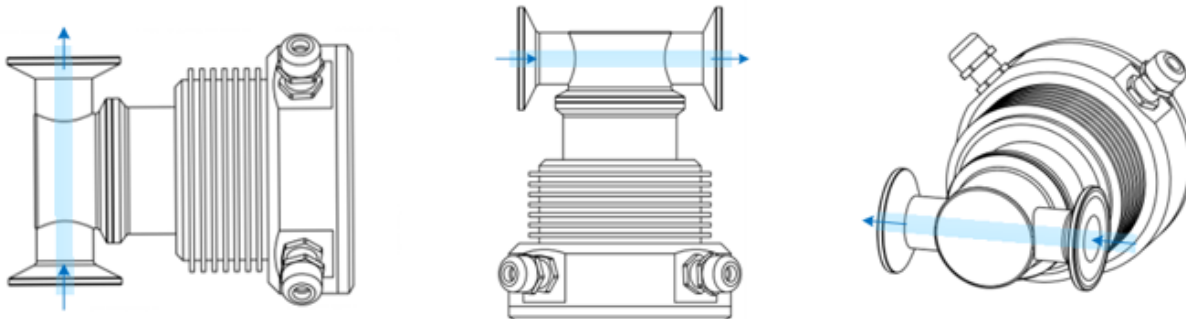
**Figure 3.** Prism RT-100 Tri-Clamp Flow Cell Assembly (P/N: 56206)

**Table 3.** Tri-Clamp Flow Cell Assembly Components

ID #	Description
1	Flow cell with 2.5-inch Port for Prism RT-100 Sensor Head
2	Prism RT-100 Sensor Tri-Clamp 2.5-inch
3, 4, 8	Tri-Clamp Flow Cell Gasket Kit (P/N: 56209)
5	3/4-inch NPT Flange
6	Flange Tri-Clamp 2-inch
7	Threaded Plug for Cleaning Device Install

## 4.2 Piping

The Prism RT-100 with Tri-Clamp Flow Cell Assembly should be installed per the diagram provided in Figure 4. Be sure to avoid installations illustrated in Figure 5.



**Figure 4.** Correct Installations

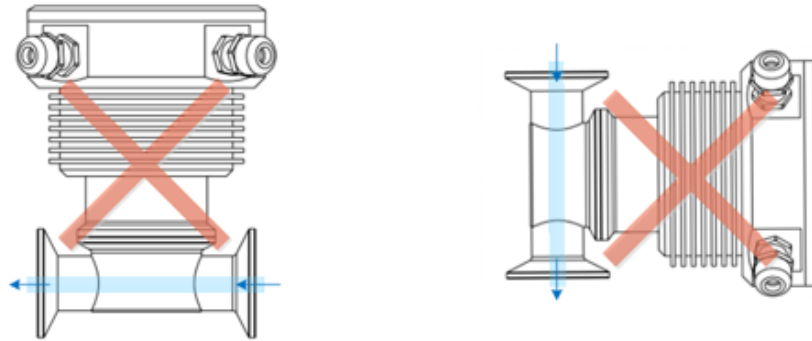


Figure 5. Incorrect Installations

### 4.3 Wiring

The Prism RT-100 unit offers two (2) cable points of attachment, both terminated with a unique connector (Figure 6). The Prism RT-100 may be powered via a direct 24VDC supply source (via 8-Pin cable provided with the Prism RT-100) or by the optional accessory called Prism RT-100 Wall Outlet Power Supply Adapter Kit (P/N 56207). Explanation of each option below:

#### Powered by a Direct 24VDC Power Source via 8-Pin Cable Provided with Prism RT-100

For applications where the Prism RT-100 is connected to and directly powered by 24VDC source (Controller, PLC, DCS etc.), the device should be connected via the 8-Pin Cable and MA-1.5CR Flying Lead Cable. These cables provide power as well as 4-20mA and RS-485 output communication to the connected device. Please refer to Table 4 for wire designations of the 8-pin cables.

#### Powered by a Prism RT-100 Wall Outlet Power Supply Adapter Kit (Optional Accessory)

For applications desiring the Prism RT-100 to be powered by a standard 110VAC wall outlet, Pyxis offers the Prism RT-100 Wall Outlet Power Supply Kit (P/N: 56207) as an optional accessory purchased separately. This kit offers a 2-Pin cable and wall outlet adapter for direct power supply from a standard 110VAC wall outlet.

**\*NOTE\*** In the wall outlet powering format, there is no need to terminate the power supply portion of the 8-Pin Cable. This cable may continue to be used in order to pass 4-20mA and RS-485 output signals or for use with the MA-CR Bluetooth adapter for **uPyxis®** App access.

Table 4. Wire Designations

Wire Color	Designation
Red	24V +
Brown	24V Power ground
Gray*	4–20mA -
White	nD/Brix %, 4–20mA +
Pink	Temperature, 4–20ma +
Blue	RS-485 A
Yellow	RS-485 B
Green	RS-485 Ground

\* Internally connected to the power ground

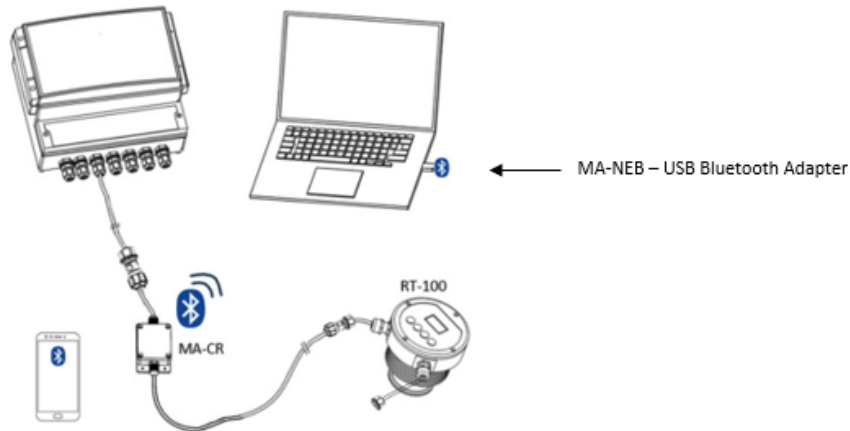


**Figure 6.** Prism RT-100 with Wall Outlet Supply Adapter Kit (P/N: 56207) and MA-1.5CR Flying Lead Cable (P/N: 50746)

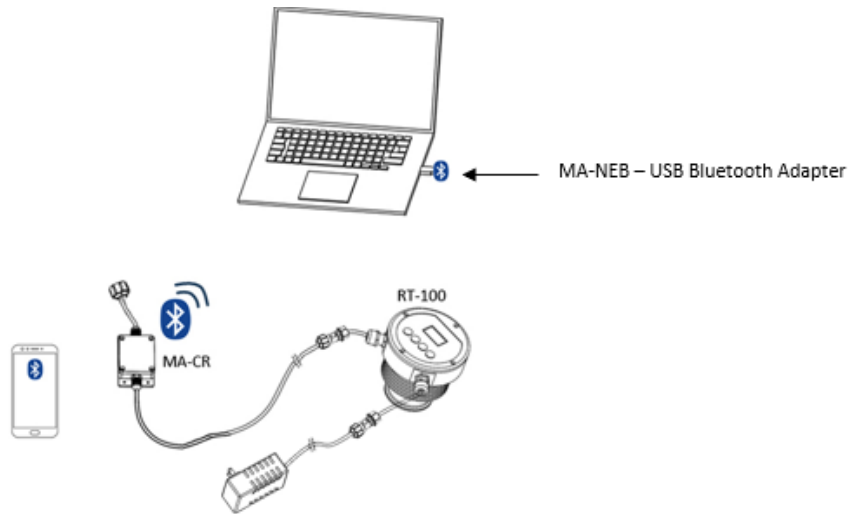
#### 4.4 Connecting via Bluetooth

Connect the Prism RT-100 to the Pyxis MA-CR Bluetooth adapter and a 24 VDC power source according to the figures below. Figure 7 shows that the Prism RT-100 is powered by a controller through the 8-Pin cable provided with the Prism RT-100. Figure 8 shows the Prism RT-100 is powered by the Prism RT-100 Wall Outlet Power Supply Adapter (P/N: 56207) through the 2-Pin cable.

**\*NOTE\*** *uPyxis® Mobile allows devices may speak directly to the MA-CR Bluetooth Adapter. uPyxis® Desktop requires MA-NEB (USB Bluetooth adapter) to be installed in the PC for wireless access to MA-CR.*



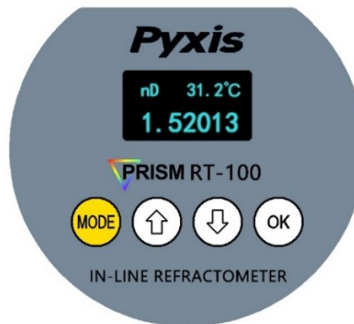
**Figure 7.** 24VDC Powered via Controller through 8-Pin Cable and MA-CR Bluetooth Adapter



**Figure 8.** 24VDC Powered via 110VAC Wall Outlet through Prism RT-100 Wall Outlet Power Supply Adapter (P/N: 56207)

## 5 Instrument Overview

### 5.1 Key Functions



**Figure 9.** Prism RT-100 Main Display Screen

**Table 5.** Prism RT-100 Key Functions

Key	Function Description
<b>MODE</b>	Launch setup function associated with the current mode
↑ and ↓	Select measurement modes (units); select available selections associated
<b>OK</b>	Return and selection confirmation

## 5.2 Measurement Modes

The Prism RT-100 measures the sample refractive index (nD) and temperature. Use the arrow keys to select the concentration units that are calculated from nD and the temperatures with using the pre-loaded equations for Brix, MPG, MEG, and ALV. The main output of 4-20mA switches with the display switching.



Figure 10. nD and Temperature



Figure 11. MEG %



Figure 12. MPG %



Figure 13. ALV %



Figure 14. Brix %

## 5.3 Sensitivity Setup

A higher sensitivity value corresponds to a slower response and a displayed value with less fluctuation. For applications that require very accurate refractive index measurement, and the refractive index does not undergo any rapid changes in the time scale of minutes, the sensitivity should be set up to the highest value of 30.



Figure 15.

## 5.4 Reset Parameters

This mode will erase the user's calibration and setting information, restore the factory calibration and setting information, including air calibration, brix/liquid concentration offset calibration, sensitivity, etc.



Figure 16.



Figure 17.

## 6 Calibration

Calibration for refractive index is not required for its use. The Prism RT-100 can however be calibrated in air to correct possible misalignment and aging of the optic components. An offset calibration for each concentration unit is provided by using a liquid sample with known concentration value.

### 6.1 Air Calibration of Refractive Index

1. Clean the Prism RT-100 sapphire lens with soft tissue.
2. If any tenacious deposits are present on the sensor lens, you may pre-soak the sensor lens in Pyxis Probe Cleaning Solution (P/N: SER-01) for 10–15 minutes, then rinse with clean water and wipe with soft tissue prior to proceeding to air calibration.

**\*NOTE\*** Please refer to the **Methods to Cleaning the Prism RT-100** for details.

3. After properly cleaning the sensor lens, remove any residual liquid from the sapphire lens.
4. Shield the lens from the ambient light.
5. Press the **MODE** key to launch the air calibration interface (Figure 18).
6. Hold the **OK** key for 2 seconds to start the air calibration process (Figure 19).
7. Once the calibration is complete, press the **MODE** key to return to measurement mode (Figure 20).



Figure 18.



Figure 19.

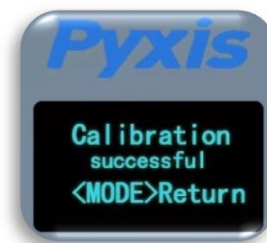


Figure 20.

## 6.2 Brix and Other Liquid Concentration Offset Calibration

The refractive index value does not require calibration and this value is internally converted to the desired liquid concentration unit selected in the sensor interface. This displayed liquid concentration unit value may be calibrated to a known solution. To do this:

1. Place the Prism RT-100 in the calibration liquid of a known concentration making sure the sensor is covered from ambient light.
2. Use the **arrow** keys to select the corresponding concentration unit.
3. Press the **MODE** key to launch the offset calibration interface for the specific concentration unit selected.
4. Proceed through the screen prompt steps to calibrate unit to the known concentration of liquid standard.



Figure 21.

## 7 Setup and Configuration with uPyxis® Mobile App

### 7.1 Download uPyxis® Mobile App

Download **uPyxis®** Mobile App from [Apple App Store](#) or [Google Play](#).

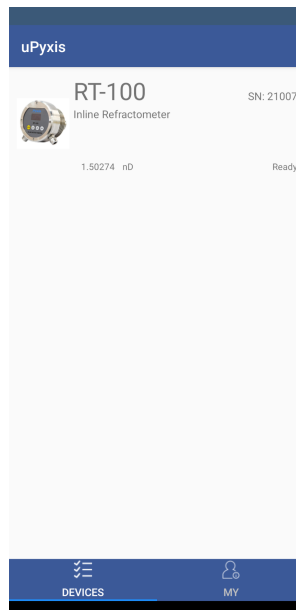


Figure 22. uPyxis® Mobile App installation

## 7.2 Connecting to uPyxis® Mobile App

Connect the Prism RT-100 sensor to a mobile smart phone according to the following steps:

1. Open **uPyxis®** Mobile App.
2. On **uPyxis®** Mobile App, pull down to refresh the list of available Pyxis devices.
3. If the connection is successful, the Prism RT-100 and its Serial Number (SN) will be displayed (Figure 23).
4. Press on the **Prism RT-100 sensor image**.



**Figure 23.**



### 7.3 Calibration Screen and Reading

When connected, the **uPyxis®** Mobile App will default to the **Calibration** screen. From the **Calibration** screen, the user can perform calibrations by pressing on **MEG Calibration**, **MPG Calibration**, **ALV Calibration**, **Brix Calibration**, and **Air Calibration**. Follow the screen instructions for each calibration step. The user may also preform a factory reset of all calibration values saved in the device by pressing **Restore Factory** and entering "upyxis" into the prompt.

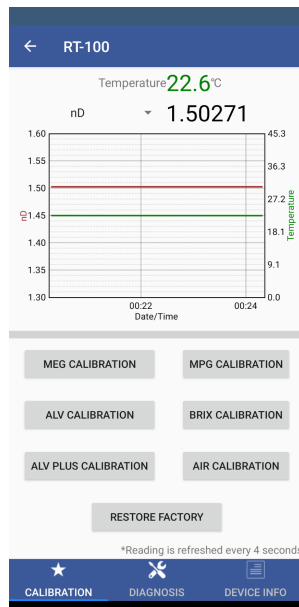


Figure 24.

### 7.4 Diagnosis Screen

From the **Diagnosis** screen, the user can check the diagnosis condition. This feature may be used for technical support when communicating with [service@pyxis-lab.com](mailto:service@pyxis-lab.com).

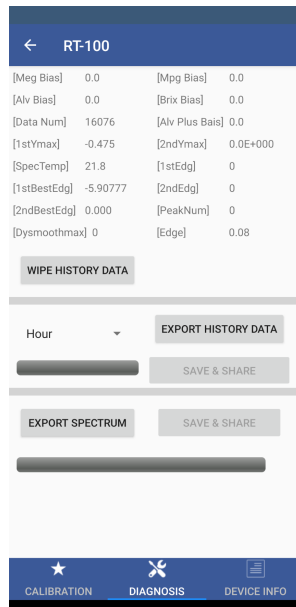
The user can choose the time period of data export, including: hour, day, week, half month, and all data stored. After selecting the time, press **Export History Data** and wait for the progress bar to load.

**\*NOTE\*** The Prism RT-100 is programmed to store data at a frequency of once per minute with a maximum of 56 days storage capacity.

The **Diagnosis** screen’s functions are described in table below:

**Table 6.**

Function	Description
Wipe History Data	It is convenient to clear unnecessary historical data. This process is relatively slow. Do not power off during the process.
Export Spectrum	Derive the original spectrum.
Export History Data	The historical data is exported and saved in CSV format. The storage contents include refractive index nD, temperature °C, Brix, EG, and other.
Save & Share	Save the data and send it to other software.
Hour (Dropdown)	Select the length of time to export data. The latest hour is exported by default. Users may select Day, Week, and Half-Month. Data can be exported for up to 56 days.



**Figure 25.**

## 7.5 Device Info Screen

From the **Device Info** screen. You can name the Device or Product as well as set the Modbus address.

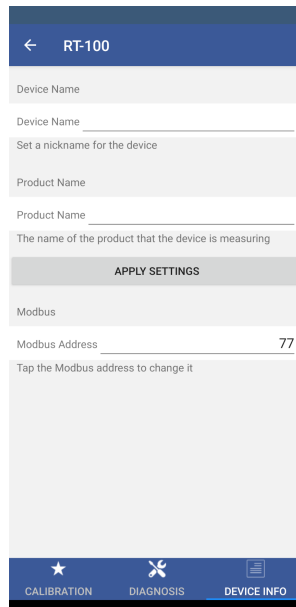


Figure 26.

## 8 Setup and Calibration with uPyxis® Desktop App

### 8.1 Install uPyxis® Desktop App

Download the latest version of **uPyxis®** Desktop software package from: <https://pyxis-lab.com/upyxis/> this setup package will download and install the Microsoft.Net Framework 4.5 (if not previously installed on the PC), the USB driver for the USB-Bluetooth adapter (MA-NEB), the USB-RS485 adapter (MA-485), and the main **uPyxis®** Desktop application. Double click the **uPyxis.Setup.exe** file to install.

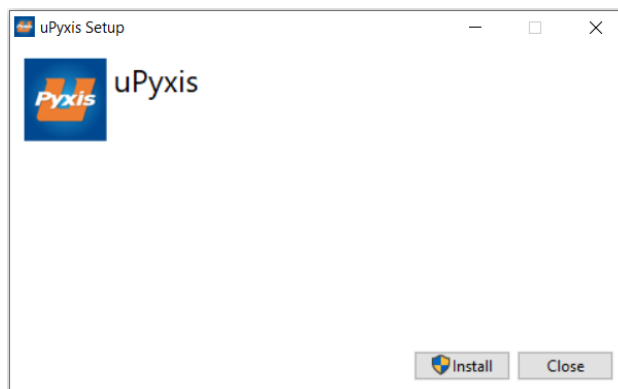


Figure 27. uPyxis® Desktop App installation

Click **Install** to start the installation process. Follow the screen instructions to complete the USB driver and **uPyxis®** installation.

## 8.2 Connecting to uPyxis® Desktop App

Connect the Prism RT-100 sensor to a Windows computer using a Bluetooth/USB adapter (P/N: MA-NEB) according to the following steps:

1. Plug the Bluetooth/USB adapter into a USB port in the computer.
2. Launch uPyxis® Desktop App.
3. On uPyxis® Desktop App, click Device → **Connect via USB-Bluetooth** (Figure 28).
4. If the connection is successful, the Prism RT-100 and its Serial Number (SN) will be displayed in the left pane of the uPyxis® window.

**\*NOTE\*** After the sensor and Bluetooth is powered up, it may take up to 10 seconds for the adapter to establish the wireless signal for communication.

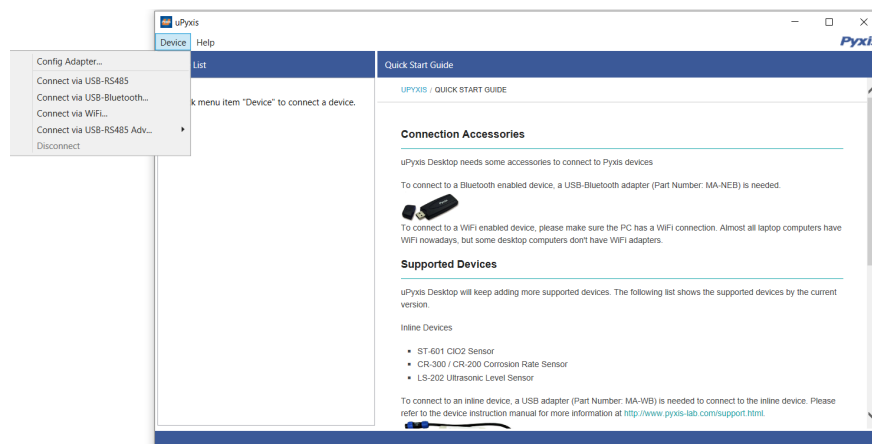


Figure 28.

### 8.3 Information Screen

Once connected to the device, a picture of the device will appear on the top left corner of the window and the uPyxis® Desktop App will default to the **Information** screen. On the **Information** screen you can set the information description for **Device Name**, **Product Name**, and **Modbus Address**, then click **Apply Settings** to save.

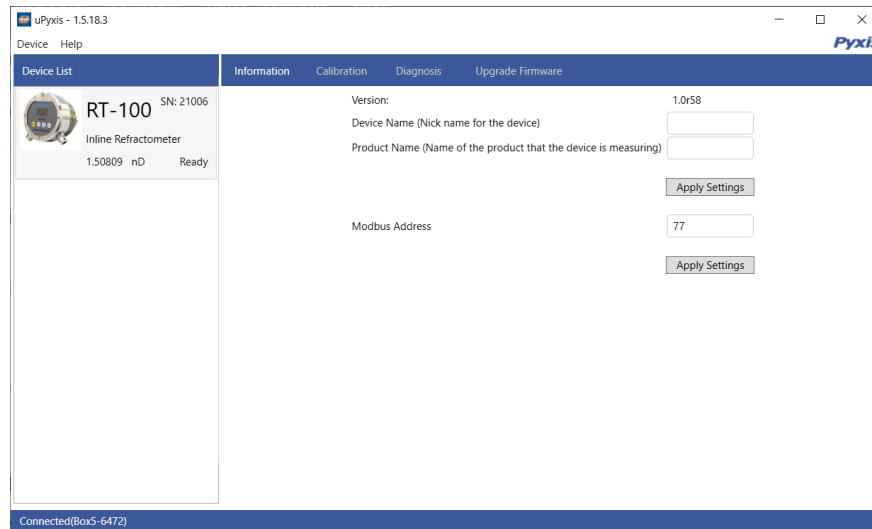


Figure 29.

## 8.4 Calibration Screen

To calibrate the device, click on **Calibration**. On the **Calibration** screen there are six calibration options:

- **MEG Calibration**
- **MPG Calibration**
- **ALV Calibration**
- **BRIX Calibration**
- **Air Calibration**
- **ALV Plus Calibration**

The user may also preform a factory reset of all calibration values saved in the device by pressing **Restore Factory Settings** and entering "upyxis" into the prompt. The screen also displays the reading of the device. The reading refresh rate is every 4 seconds.

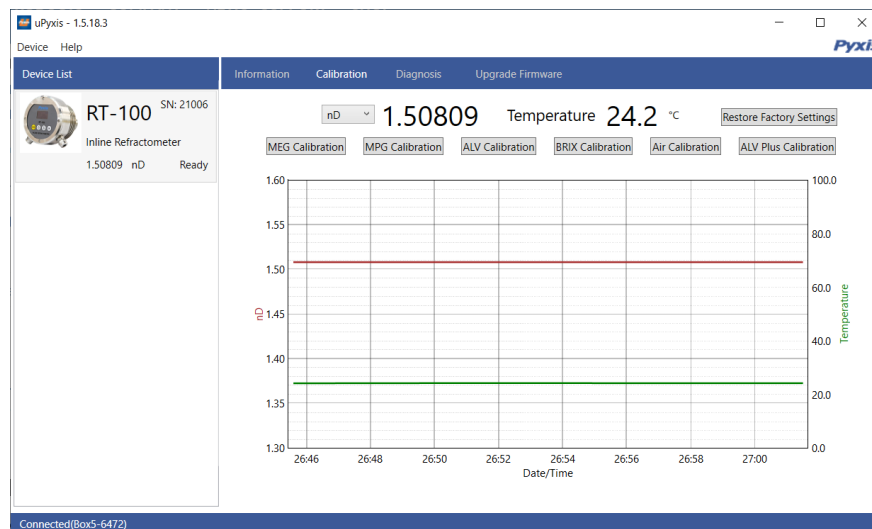


Figure 30.

### 8.5 Diagnosis Screen

From the **Diagnosis** screen, the user can check the diagnosis condition. This feature may be used for technical support when communicating with [service@pyxis-lab.com](mailto:service@pyxis-lab.com).

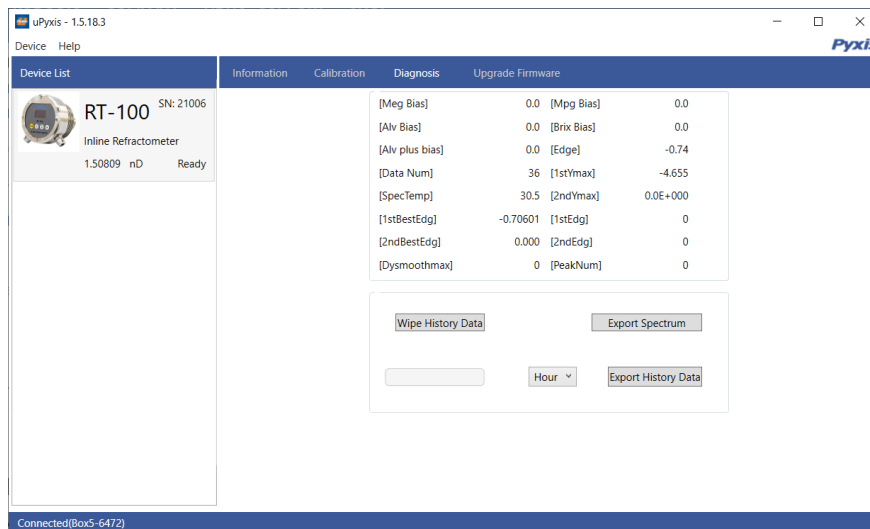
The user can choose the time period of data export, including: hour, day, week, half month, and all data stored. After selecting the time, press **Export History Data** and wait for the progress bar to load.

**\*NOTE\*** The Prism RT-100 is programmed to store data at a frequency of once per minute with a maximum of 56 days storage capacity.

The **Diagnosis** screen’s functions are described in table below:

**Table 7.**

Function	Description
Wipe History Data	It is convenient to clear unnecessary historical data. This process is relatively slow. Do not power off during the process.
Export Spectrum	Derive the original spectrum.
Export History Data	The historical data is exported and saved in CSV format. The storage contents include refractive index nD, temperature °C, Brix, EG, and other.
Save & Share	Save the data and send it to other software.
Hour (Dropdown)	Select the length of time to export data. The latest hour is exported by default. Users may select Day, Week, and Half-Month. Data can be exported for up to 56 days.



**Figure 31.**

## 9 Outputs

### 9.1 4–20mA Output Setup

The 4–20mA output of the Prism RT-100 sensor is scaled as:

Table 8.

Measurement Mode	4 mA Output Value	20 mA Output Value
Refractive Index (nD)	1.3000	1.5100
Brix (%Bx)	0%	100%
Mono Ethylene Glycol (%MEG)	0%	100%
Mono Propylene Glycol (%MPG)	0%	100%
Advanced Low Viscosity Fluid (%ALV)	0%	100%
Temperature	-20 °C	80 °C

### 9.2 Communication using Modbus RTU

The Prism RT-100 sensor is configured as a Modbus slave device. In addition to the nD, %Bx, %MEG, %MPG, %ALV, and temperature values, many operational parameters, including warning and error messages, are available via a Modbus RTU connection. Contact Pyxis Lab Customer Service ([service@pyxis-lab.com](mailto:service@pyxis-lab.com)) for more information.



## 10 Sensor Maintenance and Precaution

### 10.1 Methods to Cleaning the Prism RT-100

Soak the lower half of the Prism RT-100 sensor in 100 mL inline sensor cleaning solution for 15-minutes. If the surface is not entirely clean, continue to soak the sensor for an additional time until clean. Lightly wipe the sensor lens with a soft tissue. Rinse sensor eye with clean or DI water. Pyxis Lab Inline Sensor Cleaning Solution can be purchased at our online E-Store/Catalog at <https://pyxis-lab.com/product/probe-cleaning-kit/>



Figure 32. Inline Probe Cleaning Solution Kit

## 11 Contact Us

### Pyxis Lab, Inc

1729 Majestic Dr. Suite 5

Lafayette, CO 80026 USA

[www.pyxis-lab.com](http://www.pyxis-lab.com)

Phone: +1 (866) 203-8397

Email: [service@pyxis-lab.com](mailto:service@pyxis-lab.com)