

IC 110 E, IC 110 E PLUS

An electrical one-hose dry ice blasting machine with very low compressed air demand



Standard dry ice pellets
1.5 mm / 3 mm



Surprising performance and low consumption



Easy operation



Low maintenance



**Compact size
Mobile device**



PLASTIC NOZZLE

REMOVABLE HANDLE

ERGONOMIC BLAST GUN WITH A SAFETY SWITCH

DIGITAL CONSUMPTION INDICATOR

ANTI-VANDAL BUTTONS

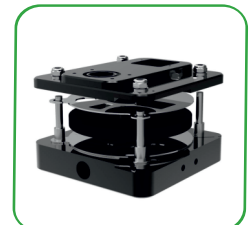
STAINLESS STEEL HOUSING

17 KG INSULATED HOPPER

5 m BLAST HOSE 1/2" WITH ANTI - KINK SPRING HOSE GUARD

AUTOMATIC OIL-WATER SEPARATOR

GROUNDING KIT



PATENTED FEEDING SYSTEM



PRESSURE CONTROL, DRY ICE CONSUMPTION CONTROL



ANTI - CLOGGING SYSTEM



STAINLESS STEEL QUICK CONNECT



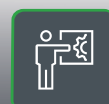
Development



Manufacturing



Maintenance and Repair



Training

Characteristics

IC 110 E is a medium ICS professional ice blaster designed for pressures of 10 bar or less which delivers exceptional cleaning performance while maintaining costs of the cleaning process at a minimum level.

The design predetermines this machine for businesses' in-house use for tool, machinery or mould maintenance applications.

The machine is characterised by unique compressed air consumption, starting at 0.5 m³/min, which makes the unit an unrivalled device in its class.

IC 110 E is a cost effective dry ice blasting solution suitable for variety of applications.

Technical specifications

- | | | |
|--|---|---|
| <ul style="list-style-type: none">■ Dimensions
Length: 597mm
Width: 446 mm
Height: 931 mm (incl. handle) | <ul style="list-style-type: none">■ Consumption
Dry ice: 0-60 kg/h
Compressed air: 0.5 – 4.5 m³/min.
(depending on the nozzle type) | <ul style="list-style-type: none">■ Weight
Empty machine:
51 kg (without the hose) |
| <ul style="list-style-type: none">■ Operating pressure
max 10 bar | <ul style="list-style-type: none">■ Hopper capacity
17 kg | <ul style="list-style-type: none">■ Material
Casing: stainless steel |
| <ul style="list-style-type: none">■ Service supply connections:
Compressed air : DIN 3489 claw coupling
Electrical: 100 – 240 V, 50 – 60 Hz, CEE
7/4 , Type F | <ul style="list-style-type: none">■ Noise Level
60 – 120 dB (A) depending on the blasting
pressure, nozzle type and the cleaned surface | |

IC 110 E



IC 110 E PLUS



Standard package contents

- **Plastic nozzle RN-10-06**
Round nozzle suitable for a wide range of uses
- **Ergonomic Blast gun**
With safety switch
- **Blast hose**
5 m 1/2"

PLUS Accesories

- **Flat nozzle**
FN-10-04-000
- **LED light for gun**
IG-10-02-000
- **Compressed air hose**
10 m 3/4"
- **Ice shovel**
2 kg Capacity



Development



Manufacturing



Maintenance
and Repair



Training