

IP 100 H, IP 100 H PLUS

A hydraulic pelletizer converting liquefied carbon dioxide into high-quality impermeable dry ice pellets



3 pellet sizes
1.5 mm / 3 mm / 16 mm



High-quality
dry ice pellets



External heat
exchanger



Minimum operating
costs



Compact
size

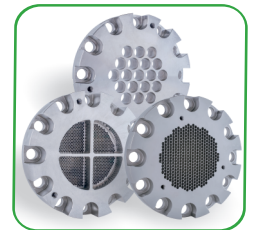
DIE PLATES FOR MAKING
1.5 mm / 3 mm / 16 mm
PELLETS

ADVANCED CONTROL
SIEMENS LOGO!8 MODULE

REMOTE ACCESS

ANTI-VANDAL BUTTONS

ROBUST STEEL FRAME
WITH ANTI-CORROSIVE
TREATMENT



INTERCHANGABLE DIE
PLATES



ADVANCED CONTROL MODULE



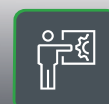
Development



Manufacturing



Maintenance
and Repair



Training

Characteristics

With the IP 100 H hydraulic unit, you will be able to produce desired quantities of high-quality dry ice pellets in-house and at a time of your choice.

If you need larger pellet quantities regularly, in-house dry ice making will bring you many benefits.

When transported over long distances, dry ice is prone to loss through sublimation. During storage and transport, dry ice loses not only weight but quality as well. Liquefied CO₂, on the other hand, may be stored without losses in a tank in the place of production. The quality of dry ice has an important bearing on the dry ice blasting performance!

The compact IP 100 H hydraulic pelletizing unit is able to make three high-quality dry ice pellet sizes. Higher-class models are supplied with three replaceable die plates for 1.5 mm, 3 mm and 16 mm pellets.

The modern pellet-making process is electronically controlled; the SIEMENS LOGO! 8 module enables remote diagnostics, which helps to reduce operation, maintenance and repair costs. Intuitive control and a digital display enhance the professional design of the machine.

The powerful hydraulic unit with a robust cylinder is custom-made by a renowned hydraulic unit manufacturer, and it comes with a sufficient capacity reserve to ensure long service life.

The external heat exchanger multiplies the pellet making efficiency: the production capacity of IP 100 H is 120-130 kg of 3 mm dry ice pellets per hour. The compact size of the unit minimizes its operating space requirements.

Make your own pellets to become independent, improve your profitability and supply dry ice to customers in your neighbourhood.

Technical specifications

| | | |
|--|---|---|
| <ul style="list-style-type: none">■ Dimensions Length: 795 mm Width: 1060 mm Height: 1 500mm | <ul style="list-style-type: none">■ Co2 connection 3/4" AG (IP-100-H), 1" AG (heat exchanger)■ Power supply 380 V/50 -60 Hz/32 A CEE - 6h/IEC 60309■ Pellet size 1.5 mm / 3 mm / 16 mm | <ul style="list-style-type: none">■ Weight 500 kg■ Co2 consumption 258 - 288 L/h■ Co2 pressure 12-21 bar |
| <ul style="list-style-type: none">■ Hydraulic unit Capacity 50 l | | |
| <ul style="list-style-type: none">■ Output 120 kg/h | | |



Standard package contents

External heat exchanger

Extrusion Die
3 mm

PLUS Accesories

External heat exchanger

Extrusion Die
1.5 mm, 3 mm, 16 mm



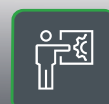
Development



Manufacturing



Maintenance
and Repair



Training